

## TOWN &amp; COUNTRY PLANNING ACT 1971



## DACORUM BOROUGH COUNCIL

To: Sowmac Investments Ltd  
Pheasant Copse  
Pangbourne  
Reading

Telford and Partners  
Consulting Engineers  
Pinewood  
Pangbourne  
Reading

SUBMISSION OF DETAILS OF LANDSCAPING  
FACTORIES WAREHOUSES ETC

UNITS 9, 10 & 11 TRING INDUSTRIAL ESTATE  
UPPER ICKNIELD WAY, TRING

Brief  
description  
and location  
of proposed  
development

In pursuance of their powers under the above-mentioned Acts and the Orders and Regulations for the time being in force thereunder the Council hereby gives approval to the details which were reserved for subsequent approval in planning permission no 4/0899/85

granted on 7 August 1986 at the above-mentioned  
location in accordance with the details submitted by you, with your  
application dated 28 August 1987

Dated 30 day of October 19 87

Signed

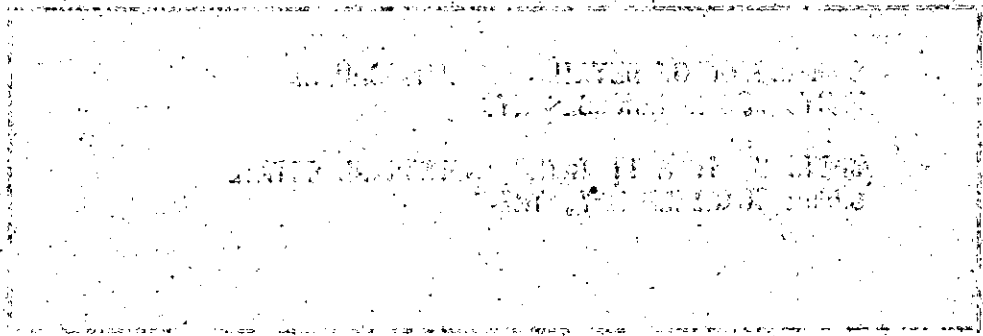
Designation Chief Planning Officer

NOTE: This is not a separate planning permission, but must be read in conjunction with any conditions attached to the permission indicated above.

**CONDITION**

The detailed landscaping scheme hereby approved shall be implemented and completed within the planting season 1987/1988 which, for the purposes of this condition, shall be deemed to end on 31 March 1988; and any trees which within a period of 5 years from this date die, are removed or become seriously damaged or diseased shall be replaced in the next planting season which shall be deemed to run from 1 October in any one year to 31 March in the next following year with others of similar size and species, unless the local planning authority gives written consent to any variation.

enhance visual amenity.



At the above mentioned  
place, the following conditions shall apply:

*[Signature]*

For the Council

NOTE: This is not a separate planning condition, but is a condition attached to the planning permission granted above.

## TOWN &amp; COUNTRY PLANNING ACT 1971



## DACORUM BOROUGH COUNCIL

To: Sowmac Investments Ltd  
Pheasant Copse  
Pangbourne  
Reading

Telford and Partners  
Consulting Engineers  
Pinewood  
Pangbourne  
Reading

SUBMISSION OF DETAILS OF LANDSCAPING  
FACTORIES WAREHOUSES ETC

UNITS 9, 10 & 11 TRING INDUSTRIAL ESTATE  
UPPER ICKNIELD WAY, TRING

Brief  
description  
and location  
of proposed  
development

In pursuance of their powers under the above-mentioned Acts and the Orders and Regulations for the time being in force thereunder the Council hereby gives approval to the details which were reserved for subsequent approval in planning permission no 4/0899/85

granted on 7 August 1986 at the above-mentioned  
location in accordance with the details submitted by you, with your  
application dated 28 August 1987

Dated 30 day of October 19 87

Signed

Designation Chief Planning Officer

NOTE: This is not a separate planning permission, but must be read in conjunction with any conditions attached to the permission indicated above.

#### CONDITION

The detailed landscaping scheme hereby approved shall be implemented and completed within the planting season 1987/1988 which, for the purposes of this condition, shall be deemed to end on 31 March 1988; and any trees which within a period of 5 years from this date die, are removed or become seriously damaged or diseased shall be replaced in the next planting season which shall be deemed to run from 1 October in any one year to 31 March in the next following year with others of similar size and species, unless the local planning authority gives written consent to any variation.

#### REASON

To maintain and enhance visual amenity.